

# Our Guide to leaving a gift in your Will



**Rennie Grove Peace**

**A gift in  
your Will is  
the ultimate  
expression of  
your support.  
Thank you.**



# The difference you can make

---

**Our vision is a future where everybody in our community is empowered to live well and die well. By considering leaving a gift in your Will, you could help us make this vision a reality.**

We have big plans for the future and gifts in Wills help us plan for that future with confidence.

From supporting people with the practical changes a life-limiting diagnosis might bring, to making every moment matter when time is short, your gift could help make a real difference to how people live and die in our community.

I hope this guide will help answer any questions you might have about how gifts in Wills work, and the difference they make.

Leaving a gift in your Will is the ultimate expression of your support. It is a chance to invest in the future of the charity so we can continue our work for generations to come. Gifts received in Wills are enough to fund one out of every two nurses in our team.

Your gift can help us provide exceptional care to those in need.

**Thank you for thinking of Rennie Grove Peace in your Will.**

**Stewart Marks**

*Chief Executive, Rennie Grove Peace Hospice Care*



# Contents

---

## Why include Rennie Grove Peace in your Will?

---

- 4-5** Meet the pledgers helping shape our future
- 6-7** Our history
- 8-9** About us
- 10-11** Supporting our service through your generosity
- 12-13** Why leave us a gift in your Will
- 14-15** Meet our service users
- 16-17** How gifts in Wills fund our services

## What to know about Wills

---

- 18-19** The importance of writing a Will
- 20-21** Types of gifts you can include in your Will

## How to leave a gift in your Will

---

- 22-23** Getting started - How to leave a gift in your Will
- 24-25** Will-writing planner
- 26** Glossary of legal terms
- 27** Our promise to you as a pledger
- 28** Thank you

## Meet the pledgers helping shape our future



“My husband Bob was diagnosed with cancer on New Year’s Eve 2019. The next three painful years were filled with radiotherapy, chemotherapy, and numerous appointments.

“Bob was sadly never pain-free. In July 2022, he was admitted into the Inpatient Unit at Peace Hospice for two weeks to receive a constant morphine supply via a syringe driver. During these two weeks, the staff and volunteers were exceptionally caring, and the atmosphere and outdoor areas were peaceful.

“A few weeks later, Bob became very unwell and was re-admitted to Peace Hospice, where he received excellent care and respect. He sadly passed away aged 66. I know he would be happy that I have left a gift to Rennie Grove Peace in my Will to support their excellent palliative care, both in the hospice and at home.”

**- Bob’s wife, Julie, who has pledged a gift in her Will**

“I decided to leave a gift in my Will to Rennie Grove Peace Hospice Care after witnessing first-hand, while working for the charity, the outstanding 24/7 nursing care they provide to local families. The seamless support given to patients and their loved ones during desperate times is wonderful.

“Leaving something for their future shows my gratitude to this amazing team and I know this simple gesture will make an incredible difference.”

**- Michele, gift pledger**

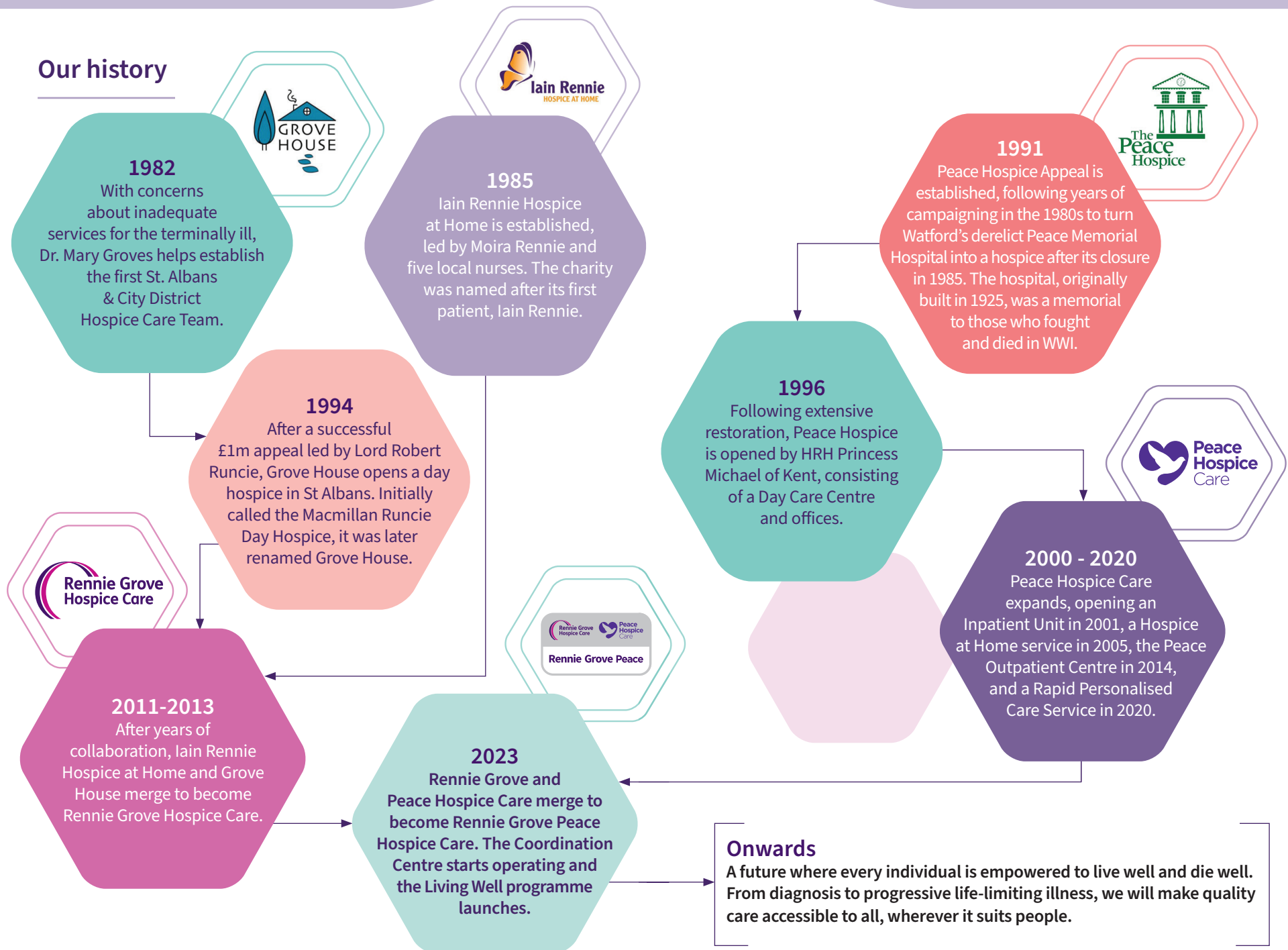
“The nurses provided a wonderful service during the last three days of my father’s life and afterwards, helping my mother and me. It made a massive difference to have people with us or on the phone, day or night, who knew exactly what to say and do. They made us feel like the only family they were supporting. I will never forget their kindness, compassion, and professionalism.

“It is a wonderful organisation, and everyone deserves this kind of help. I have been pleased to support Rennie Grove Peace as a volunteer and through a small standing order, and I have included a gift in my Will.”

**- Mary, gift pledger**



## Our history







We only receive 14% of our funding from statutory funds and rely heavily on public support to deliver our services, from donations, our shops, and increasingly, gifts in Wills.

Gifts in Wills help us keep providing and expanding our services to meet the increasing needs driven by an ageing population and the pressures on the NHS. Unfortunately, many people don't get the care they need. About one in four people die each year without adequate end of life care. With your support, we can improve this in Buckinghamshire and Hertfordshire.

## About us

Rennie Grove Peace Hospice Care is a charity dedicated to providing compassionate care and support for people with progressive, life-limiting illnesses in Buckinghamshire and Hertfordshire. Our vision is to help individuals and their families live as well as possible through the provision of palliative and end of life care, and bereavement support services.



## Supporting our service through your generosity

We support patients and their families across several locations, offering care in a place that suits them best. Our multi-disciplinary team offers a wide range of services that stretch beyond nursing care, to ensure our patients and their carers receive the full range of support they need.

Thanks to the overwhelming generosity of our supporters, all care is free of charge.



**Could you help us make a lasting difference in the lives of our patients and their families?**



**Hospice at Home Services**  
Our Hospice at Home team provides personalised care to patients in their own home, so they are surrounded by the people and things they love the most.



**Inpatient Services**  
At our Inpatient Unit, patients receive specialist care in a calm and friendly environment, for a short stay or end of life care.



**Outpatients & Supportive Care**  
We support people from the moment they are diagnosed, empowering them to live well throughout their illness.



**Children & Young People Services**  
We provide a safe and nurturing space for children and their families to enjoy special moments together when every moment matters.



**Bereavement & Wellbeing Support**  
We help patients, families, and carers understand their emotions, providing comfort and kindness during difficult times. Our listening and talking therapies can help from diagnosis, through to bereavement support for loved ones.



**Compassionate Communities**  
Our trained volunteers keep people connected to their local community, providing companionship and helping them enjoy life.



## Why leave us a gift in your Will

Your gift supports nurses, clinical staff, specialist carers and essential medical equipment. It funds training and education to enhance our care. Your generosity provides patients with pain relief and symptom management through medication, physiotherapy, and massage therapy. It offers creative outlets through art and music therapy, or meditation. It gives counselling support through their journey and in bereavement.



Your gift supports rehabilitation services to improve quality of life. This means more time for patients to spend with their loved ones, creating precious memories together when every moment matters.



## Making moments matter – David and Bev's story



**David's diagnosis with oesophageal cancer at the age of 63 came as a devastating blow to him and his family.**

His wife, Bev says: "In the last eight weeks of his life David became quite ill. He was in a lot of pain during this time. That's when the Hospice at Home team became involved. The nurses would come to our home every other day to deal with the syringe driver that delivered the medication to keep his pain under control.

"In June 2023, it was our 39th wedding anniversary. We were desperate to celebrate but couldn't stay away from home because David's syringe driver needed to be topped up every 24 hours.

"In the end, the Hospice at Home team made it possible for us to get away for the day. A lovely nurse came to our home early in the morning to top up the syringe driver so we could get away and come back before it needed topping up again.

"We had such a lovely day. We visited friends near Rutland and had an anniversary cruise on Rutland Water.

"It was very special. I'll always treasure that day. The Hospice at Home nurse went way above the call of duty to make our special day possible. I'll always be so grateful that she found a way to make it happen."



## Meet our service users

### Steve & Angela

Thanks to generous gifts from people like you, we've been able to support individuals like Steve and Angela on their journeys. Their stories show the impact our supporters' contributions have on real lives. Read on to discover how a gift in your Will could make a profound difference.



### Steve's Story

**Steve's wife, Samantha, was looked after by Rennie Grove Peace and sadly passed away in December 2020. In 2023, Steve decided to attend one of our Compassionate Cafés to help cope with his grief.**

"The story starts in December 2020 when I lost my late partner Samantha to a sudden, quick, liver cancer which absolutely rocked everyone's world around her.

"After she passed away, Peace Hospice offered me bereavement counselling which I accepted and found really helpful. I felt I really needed to talk to someone. It was at that point that the counsellor mentioned Compassionate Cafés."

"Two years later, the grief really hit me and completely shattered me. I had a complete mental breakdown and isolated myself from support. I battled through it, but I knew I needed professional help. I remembered the Compassionate Cafés and got in touch with the hospice.

"They kindly told me about a new Compassionate Café starting in Abbots Langley, which is close to where I live. I attended the first one there. I hoped that the empathy that I would get with sharing my story would help me and it did. It was a wonderful experience meeting so many lovely volunteers."



### Angela's Story

**Angela has been accessing Rennie Grove Peace services since a cancer diagnosis in the summer of 2022.**

"After being diagnosed with breast cancer I was treated with a mastectomy and radiotherapy. The cancer had spread to my bones which impacts my mobility and causes me pain.

"I was referred to the specialist nurse clinic at Peace Hospice for support. The nurses at the clinic helped me manage my pain through medication and referred me to the outpatient exercise course.

"I don't drive but Rennie Grove Peace arranges a volunteer driver to bring me to the class, which is great.

"I absolutely love the exercise classes. For me, the benefits are two-fold. First, the exercises help me to stay mobile. I have lost a lot of use of one arm due to nerve damage from the radiotherapy. The exercises are tailored and really help me to build the strength back up in my arm.

"The other benefit for me is the social side. The group is wonderful. We always have a chat and laugh during the sessions. I wake up on Tuesday mornings looking forward to coming to the exercise class."



## How gifts in Wills fund our services

### A gift of £1,673

Could fund a syringe driver to deliver regular medication, helping patients stay as pain-free and comfortable as possible.

### 15% of a £50,000 estate

Could fund five weeks of counselling sessions, to support patients and their families along their journeys and through bereavement.

### 10% of a £700,000 estate

Could pay for a year of care from one of our specialist nurses to provide support, care, and symptom management.



## The importance of writing a Will

Gurvinder Sehra is a private client solicitor and managing partner at Kidd Rapinet in High Wycombe, who generously dedicates her time and expertise to our annual Make Your Will Month. Here are the key reasons she recommends having a Will.

### 1. Appoint Executors:

A Will lets you decide who will manage the administration and distribution of your estate after you're gone, making it clear who will take responsibility for matters after your death. Having a Will in place makes it easier for them to follow your wishes.

### 2. Make sure your assets go to your loved ones:

A Will allows you to choose how you divide your estate between beneficiaries of your choice, and set up trusts if needed to accommodate their circumstances. Without a Will, your estate may end up with people who you did not intend to benefit. Furthermore, your estate could end up with the Crown.

### 3. Appoint a guardian for your children:

If you have young or vulnerable children, a Will provides a legal framework to ensure their needs are taken care of by appointing a guardian.

### 4. Protect your partner's rights:

If you and your partner are not married, you won't have the same legal rights as married couples. You can ensure your partner is taken care of by naming them in your Will.

### 5. Reduce inheritance tax:

By including a gift to charity in your Will, you can reduce the inheritance tax on your estate. If you leave 10% or more of your estate to charity, the inheritance tax rate for the rest of your estate drops from 40% to 36%.

### 6. Leave a charitable gift:

You can include a gift to a charity like Rennie Grove Peace, which will pass free of inheritance tax.





## Types of gifts you can include in your Will

A gift in your Will costs you nothing today. You can ensure ongoing support for a cause close to your heart, even after your lifetime. By including Rennie Grove Peace in your Will, you'll be investing in our future. Your generosity will secure the future of local hospice care, helping us continue providing essential end of life care for future generations to come. Here, we explain the types of gifts you may wish to consider leaving in your Will.

### Residuary gift The most impactful way to leave a gift in your Will.

A residuary gift is a percentage of your remaining estate after all expenses, debts, and gifts in your Will have been settled. This type of gift can make a greater impact, as it is a percentage rather than a fixed amount. This means that it retains its value and is not impacted by inflation.



## Other types of gift

### Pecuniary gift

This is a specific amount of money, also known as a 'cash gift.' It's a good idea to review pecuniary gifts from time to time, as the effects of inflation mean that they can lose value over time.

### Specific gift

This is a specific item or items. For example, stocks and shares, jewellery or a property.

Every gift, no matter how big or small, is used to make a difference to people, their families, or those close to them in Buckinghamshire and Hertfordshire.

Every gift is significant. Allocating even a small percentage of your estate, while ensuring that those closest to you inherit the majority, can make a meaningful difference.



## Getting started - How to leave a gift in your Will

### Online - A simple and convenient way to leave a gift

Leaving a gift in your Will is simple and easy with our free\* online Will-writing partner. You can start your online Will today and choose either a free basic Will or pay a bit more for additional protection. Our partner's inhouse legal team will assist you throughout the process to ensure your Will is properly drafted.

\*Our online Will-writing partner offers a free service for straightforward Wills. A more detailed Will with complex drafting and clauses may incur additional fees. Speak to a solicitor about what this means for you.

### In person - During our Make Your Will Month

Throughout Make Your Will Month, our supporting solicitors across Buckinghamshire and Hertfordshire will draft a standard Will for you or update your existing Will. Instead of their usual fee, they will invite you to donate to Rennie Grove Peace Hospice Care.



### In person – With your solicitor

If you'd like to leave a gift to Rennie Grove Peace in your Will, all you need to provide your solicitor with is our charity name, number and registered charity address.

**Registered Charity Name: Rennie Grove Peace Hospice Care**

**Registered Charity Number: 1201713**

**Registered Address: Peace Drive, Watford, Hertfordshire, WD17 3PH**



## Will-writing planner

Use our handy Will-writing planner to make helpful notes ahead of writing your Will.

<b>Full name</b>	<b>Appointed legal guardian of children, name and address</b>
_____	_____
<b>Your address</b>	_____
_____	_____
_____	_____
<b>Your partner's full name and address</b>	_____
_____	<b>Appointed executors' full names and addresses</b>
_____	_____
_____	_____
<b>Children's or other beneficiaries' full names and addresses</b>	_____
_____	<b>Instructions for caring for pets</b>
_____	_____
_____	<b>Exclusion causes: Things you don't want to happen</b>
_____	_____
_____	<b>Gifts to charities</b>
_____	_____
_____	_____
_____	<b>Funeral instructions</b>
_____	_____
_____	_____



### Assets

Home	£ _____
Any other property	£ _____
Car	£ _____
Furniture Household effects (eg antiques)	£ _____
Items of particular value (eg jewellery, handbag)	£ _____

### Financial

Savings in banks and building societies	£ _____
Shares/ Premium Bonds / investments etc	£ _____
Insurance policies	£ _____
Pensions	£ _____
Other	£ _____

### Liabilities

Mortgage	£ _____
Overdrafts	£ _____
Loans	£ _____
Credit card debts	£ _____

<b>Total assets</b>	£ _____
---------------------	---------



## Glossary of legal terms

There's a lot of terminology involved in Will-writing, so we've provided a helpful glossary of terms to guide you through the process.

- 1 **Assets** - Everything an individual owns that is worth money, such as a house or car.
- 2 **Beneficiary** - An individual or organisation designated in a Will to receive a portion of the estate.
- 3 **Bequest** - A specific gift left in a Will, such as money, property, or other assets.
- 4 **Codicil** - A legal document that makes changes or additions to an existing Will without revoking it.
- 5 **Conditional gift** - A gift in a Will that only takes effect if certain conditions specified by the testator are met.
- 6 **Estate** - All of an individual's assets combined, including money, property, and personal belongings.
- 7 **Executor** - A person appointed in a Will to manage the estate, ensuring that the deceased's wishes are carried out.
- 8 **Guardian** - A person named in a Will who is responsible for taking care of young or vulnerable children after the testator's death.
- 9 **Inheritance Tax** - A tax imposed on the transfer of assets from a deceased person to their beneficiaries.
- 10 **Intestate** - The condition of dying without a valid Will, resulting in an estate being distributed according to state laws.
- 11 **Liabilities** - Everything that an individual owes money on, such as a mortgage or credit cards.
- 12 **Probate** - The legal process of validating a Will and distributing the deceased's estate.
- 13 **Testator** - The person who creates and signs a Will, outlining how their estate should be managed and distributed after their death.
- 14 **Trust** - A legal arrangement where assets are held by one party for the benefit of another. Often used to manage and protect assets for beneficiaries.

## Our promise to you as a pledger

- We'll answer your questions honestly and quickly.
- We won't put you under any pressure. Take your time to decide what's best for you and your loved ones.
- We will respect your wishes as outlined in your Will.
- We'll use your special gift wisely and effectively, ensuring it makes a meaningful impact as per your intentions.
- You don't have to tell us your decision. We respect your right to privacy. If you share information with us, this is kept confidential.
- You can visit us and see our services – we welcome visitors.

If you'd like to keep in touch with us, let us know by filling in the enclosed form. We will send you our biannual Together newsletter, either by post or email, whichever you prefer. You'll also receive the Rennie Grove Peace Impact Report each year, so you can see how your support is really making a difference.

**If you want to get in touch or have any questions, contact our friendly Gifts in Wills team on**

**T: 01442 89 02 22    E: [legacy@renniegrovepeace.org](mailto:legacy@renniegrovepeace.org)**





**Rennie Grove Peace**

## Thank you

Thank you from the bottom of our hearts for considering leaving a gift to Rennie Grove Peace Hospice Care in your Will. Your thoughtfulness and generosity make a world of difference to those we care for.

At Rennie Grove Peace, we strive to serve, reach, and strengthen our community support through the provision of compassionate care to those facing life-limiting illnesses. Your generous gift will help us continue to maintain and expand our services, enabling us to meet the growing needs of our community and deliver the specialist care they deserve.

Together, we make a lasting difference in the lives of those we serve: our patients, their families, and our community.

*With heartfelt thanks,  
Rennie Grove Peace Hospice Care*

Help us  
make a lasting  
difference in the  
lives of our patients  
and their families.



☎ 01442 89 02 22

✉ [legacy@renniegrovepeace.org](mailto:legacy@renniegrovepeace.org)

🖱 [renniegrovepeace.org](http://renniegrovepeace.org)

Registered Address: Peace Drive, Watford, Hertfordshire WD17 3PH  
Registered Charity Number: 1201713



Registered with  
**FUNDRAISING  
REGULATOR**