

TOGETHER



Meet our new Chief Executive – page 2

Protecting hospice care for the future – page 12

New fundraising challenges for 2026 – page 16



Rennie Grove Peace

Welcome to the Spring 2026 issue of our **Together** newsletter

As the new Chief Executive of Rennie Grove Peace Hospice Care, I'm delighted to introduce the latest issue of our Together newsletter.

Since I joined the organisation in November, it has been my pleasure to get to know some of the wonderful people who make Rennie Grove Peace the charity it is. From staff to volunteers or patients and families to supporters, every person plays a part in making this a wonderful organisation to join.

There's no escaping the fact that the financial climate for all hospices is challenging. Navigating this will involve developing and sustaining strong partnerships – including our work with Hospice UK to lobby the Government on sustainable funding, collaboration with other hospices, and thanking our excellent volunteers and donors. As our supporters, you are the lifeblood of Rennie Grove Peace. Without you we would be unable to offer support to some of the most vulnerable people in our local communities.

In this issue we're calling on you to help protect local hospice care. Whether you are able to support us financially, by giving your time or by spreading the

word about our services, you have an important role in protecting our services for the future.



Appealing to patients who could benefit from our services and attracting local people to support us is central to our work. As part of this, you will start to see in the coming months some slight updates to our brand look and feel, as well as some changes to the words we use in our communications. This is to ensure that external perceptions of the charity keep pace with the reality of a modern hospice that is here for everybody in our community.

Thank you for your support, now and in the future. It really does make a huge difference.

We'd love to hear your feedback on this newsletter. You can contact the team on marketing@renniegrovepeace.org

**Tom O'Connor, Chief Executive
Rennie Grove Peace Hospice Care**

A handwritten signature in black ink that reads "T. O'Connor".



Did you know we now have a self-referral form, making it even easier to access our services? If you, or anybody you know, could benefit from our support please visit renniegrovepeace.org/referral or scan the QR code to find out more.

SUPPORT AT EVERY STAGE: END OF LIFE CARE

As a hospice care charity we support people through four main phases of living with a progressive life-limiting illness: early support following a diagnosis, support with living well, end of life care and bereavement support for those around each patient.

The end of life care phase is the one that most people associate with hospice care. At Rennie Grove Peace we support people to live well with their illness and when the time comes we help people to die well – ensuring they feel safe, supported and respected. This includes careful management of symptoms such as pain, as well as the emotional, psychological and spiritual support that each person needs to have a good death – one that reflects their wishes and values.

Many people are familiar with end of life care being delivered in a hospice building. But did you know that only a small

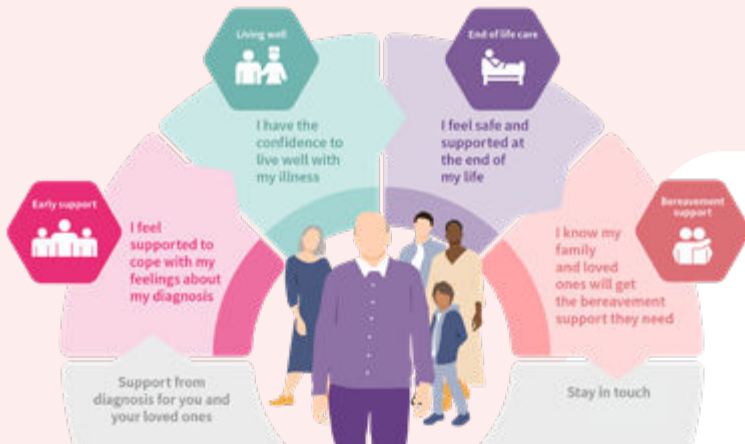
proportion of patients in this phase are cared for at our Inpatient Unit? The vast majority of people receive the care and support they need elsewhere.

This is often provided in a person's own home – which may be a family home or a care home. Our Hospice at Home teams are multidisciplinary and include doctors, nurses, paramedics and healthcare assistants.

While supporting individuals' medical needs is a key part of Hospice at Home care, the personal care – such as washing and dressing – provided by our Rapid Personalised Care Service is also vital in allowing people to stay in their own home if that's the best place for them.

We also care for the people around each patient, to ensure the whole family has the support they need during this phase.

Visit renniegrovepeace.org/our-care to find out more.



‘The Hospice at Home team emotionally held us all and gave us a deeply felt sense of security’

After living with Alzheimer’s disease for almost a decade, Joy’s condition deteriorated following a seizure in September 2025. At this point she was referred to Rennie Grove Peace and was supported in her own home by our Hospice at Home service as she neared the end of her life. Here Joy’s daughter, Sharon, explains the difference this made to the whole family:

“My mum, Joy, was an extraordinary woman. She was loving, kind, and intuitive – a true people person. She had groups of friends across all areas of her life and a lifelong love of music, travel, and life itself.

“After being diagnosed with Alzheimer’s disease at the age of 77, her dependence on care increased over the years, culminating in her being completely bed-bound by August 2020.

“Despite her decline, Mum’s love of music never faded. Music filled her days, giving her joy and connection even when other abilities slipped away. She remained as warm and loving as she had always been.



“When she was referred to Rennie Grove Peace after the seizure in September 2025, I knew from the moment they arrived that Mum was in the best possible hands.

“The nurses looked after Mum, and also supported Dad, giving him space to express his fears and offering reassurance.

“The team provided not just medical care but emotional support for the whole family, answering questions, explaining medications, and walking us through what to expect with warmth and kindness.

“They spoke to Mum as if she were fully present, noticing every tiny detail, every little facial expression whether a little smile or a slight frown.

“Even after Mum died, they were there, checking in, making sure we knew we could always reach out.

“Mum’s death was a testament to compassionate care. The hospice emotionally held us all and gave us a deeply felt sense of security.

This made Mum’s passing peaceful for all of us.”



A WILL PROTECTS YOUR LOVED ONES – A LEGACY GIFT PROTECTS YOUR COMMUNITY

When you make a Will, you decide what happens to everything you've worked for. And when you include a gift to Rennie Grove Peace in your Will, you can help protect hospice care in your community.

As a charity, we only receive 14% of our funding from statutory sources each year and we rely on the generosity of our community to cover the rest.

1 in 7 of the people we support are cared for thanks to gifts in Wills so leaving a gift in your Will to Rennie Grove Peace is a way to care for the people around you – your community, your neighbours, or maybe even someone close to you. It's a quiet promise that when someone needs support, comfort, and dignity, it will be there.

This May our annual Make Your Will Month is giving you an opportunity to plan ahead and think about the kind of legacy you would like to leave.

During the month, local solicitors are supporting our work by giving their time to write Wills. They kindly waive their fee so you can write your Will in return for a voluntary donation to Rennie Grove Peace. We suggest donations of £250 for a single Will or £350 for a pair of mirror wills – which is a considerable saving on the usual cost which can range from £500–900.

Will you take the chance to provide peace of mind for you and your family, as well as protecting hospice care for the future? Visit renniegrovepeace.org/wills26 to find out more.

All change on the high street

If you've visited one of our high street shops recently, you may have noticed it is sporting a new look. Thanks to external funding, all of our shops have now been rebranded and refreshed, both outside and inside, to be clearly identifiable as Rennie Grove Peace Hospice Care. We hope that you will enjoy the more up-to-date look and layout the next time you visit one of our shops.

Our Chesham shop also has a new home after it moved to a different, more spacious unit on the same street. The move has given us room to welcome more shoppers, donations and volunteers, helping us generate more money to fund the care that local families rely on.

You can now find the shop, just a little further along, at 128 High Street, Chesham HP5 1EB, where it is open seven days a week.



UNEARTHING HIDDEN GEMS

As a charity we strive to make the most of every single item that is kindly donated to our charity shops. This means that our shop teams are trained to sort each item and sell it in the most effective way. Sometimes an item is so valuable or so niche that a high street shop isn't the best place to realise its worth. In those cases, the item is sent to our ecommerce team for assessment, listing and sale via an online platform such as eBay. This means we can reach a global audience of people who are looking for just that item. Below are some examples from recent months.

ITEM

ROYAL DOULTON 'BUNNYKINS' CERAMIC CHRISTMAS NIGHT LIGHT HOLDER

DONATED IN: Princes
Risborough

SOLD FOR: £405.50

TO A CUSTOMER IN:
New Zealand



ITEM

HAND-PAINTED CERAMIC CHINESE UMBRELLA STAND

DONATED IN: Harpenden

SOLD FOR: £252.27

TO A CUSTOMER IN:
Stockton-on-Tees

In recent years we have also been able to raise vital income by selling stock that was donated by companies from end of line or returned items. If you own, work for or have connections with a company that may have stock to donate to our retail operation, we would love to hear from you.

Contact the team on 01442 87 16 27 or online@renniegrovepeace.org



ITEM

FOUR VINTAGE EDITIONS OF MAGAZINES FROM 1936-42

DONATED IN: Princes
Risborough

SOLD FOR: £25.00

TO A CUSTOMER: whose
mother had collected all the
issues minus one. He had
been searching for it and
was delighted to find the
missing issue in this bundle.

BRINGING PARAMEDIC SKILLS TO THE HEART OF HOSPICE CARE

After five years working as a paramedic with the ambulance service, William joined our Buckinghamshire team last August as a Senior Community Hospice at Home Paramedic.

Since joining the team he has discovered that there's no such thing as a typical day for a palliative paramedic! He says:

“During some shifts I make routine visits, and other shifts are for responsive visits. During the responsive shifts I go out to patients who have called because they have an immediate, urgent need.

“The responsive visits are for all of the areas of Buckinghamshire that Rennie Grove Peace serves, so I often spend a long time travelling from one end of our ‘patch’ to the other, to get to patients when they need us.”

William says he finds these visits particularly rewarding as they make good use of his paramedic training to arrive

during a crisis, assess the situation, identify the correct care for the patient and provide emotional support to the patient and those around them.

When asked about the differences between shifts as a paramedic with the ambulance service and at Rennie Grove Peace, he says:

“Although the situation we arrive in is different, the core skills of being a paramedic are the same in both roles. Care, communication and compassion are at the heart of being a paramedic and that applies whether I’m arriving at the scene of an accident or visiting a patient in their own home as they near the end of their life.”

“As a paramedic it is a privilege to be welcomed into people’s homes during hard times and to be able to care for them. This role and the uniform

inspires a certain trust in people which means they welcome you into their home without question and that is a privilege that I never take for granted.”



Updates from our patient services teams

VIRTUAL WARD

As a hospice charity we know that many people would prefer to be cared for in the comfort of their own homes when living with a progressive life-limiting illness. But when a patient's health is unstable or at risk of deterioration this can become harder. That's where our Virtual Ward service comes in – offering hospital-level palliative care, round-the-clock, to patients in their own home. We are delighted to share that this service has now been expanded into St Albans, Harpenden and Dacorum.

With the support of technology, our dedicated team of doctors, nurses, paramedics and allied healthcare professionals* will work together to monitor patients closely, respond quickly to changes in their condition and provide personalised care tailored to their needs.

This approach helps reduce stress for patients and their families, while ensuring they get the specialised care they need as quickly as possible and in the familiarity and comfort of their own surroundings.

*allied healthcare professionals are degree-level practitioners, such as Physiotherapists and Occupational Therapists, who diagnose, treat, and rehabilitate patients – with a focus on improving health and wellbeing.

NEW DEMENTIA SUPPORT HUB

We are delighted to be working in partnership with Say it with a Smile to host a new dementia support hub at Grove House in St Albans.

The Smile Support Hub will take place on the second Wednesday of every month and offers a welcoming and supportive space for people living with dementia or memory impairment, along with their families and carers. Visitors can expect musical entertainment and themed social activities at each session, as well as refreshments. Volunteers from both charities will be on hand to make sure everyone feels relaxed, supported and included.

Hannah Say, Founder and CEO of Say it with a Smile, says:

“Living with dementia can be incredibly isolating, not just for the person diagnosed but for their entire family. The Smile Support Hub is about creating a place where people feel safe, can meet others facing the same challenges, make new friendships and enjoy the entertainment!”

For more information or to book your place, please contact info@sayitwithasmile.org.uk



COMPASSIONATE COMMUNITIES NEWS

It has been a strong start to the year for our Compassionate Communities service with the launch of two new events.

NEW ART CAFE SUPPORTS WELLBEING

In January we launched a new CompassionART Café in Hemel Hempstead. The new café, in partnership with The Liberty Team Rooms & Community Hub, runs from 2.00pm to 3.30pm on the third Wednesday of each month.

It provides a creative, supportive space specifically for anyone who has experienced bereavement or who may be feeling lonely due to illness. The sessions will offer a varied programme of arts and crafts activities designed to encourage relaxation, connection and mindfulness.

Our CompassionART cafés are free to attend with no need to book in advance. Find out more at renniegrovepeace.org/compassionartcafes



PEER AND WELLBEING SUPPORT AT THE AMERSHAM HUB

In March we launched our first Support Hub in Buckinghamshire – The Amersham Hub. It has been created as a welcoming space for people in Buckinghamshire who have a life-limiting illness or are frail due to age, to connect with others in similar situations.

Open to loved ones and carers as well as patients it will run on the third Monday of every month from 2.30pm to 4.30pm, at the Chilterns Lifestyle Centre, Amersham.

Support Hubs provide a warm, drop-in environment for friendly conversation, peer support and gentle wellbeing activities such as chair exercise, art collage, flower arranging, and talks on subjects like nutrition. Sessions are free, with no need to book.

The Amersham Hub is for anybody with a life-limiting illness and those who are frail due to age, including people living with Parkinson's disease, mild Dementia, progressive respiratory and neurological conditions, incurable cancer and heart failure.

Find out more at renniegrovepeace.org/amersham





It's good to talk

As a hospice charity we know that good end of life care begins long before a person actually reaches the end of their life. Advance care planning is something that everybody can think about, at any time, as a way of ensuring they are prepared, in control and confident about their wishes for the future.

Advance care planning isn't only for people who are living with a life-limiting illness. It is often better to start the process of thinking about care wishes while you're well so the process can be done without any time pressure.

To encourage people in our community to think about their advance care wishes, we run regular public events and workshops on the topic. This year we hosted an event called 'Thinking ahead – a conversation about future care'. At the event our Medical Director, Dr Sarah Klinger, was

joined by local GP, Dr Hannah Cowling, to discuss advance care planning and the ReSPECT process – which is a way of recording wishes in a Recommended Summary Plan for Emergency Care and Treatment (ReSPECT) – and what support is available.

Events such as these are also a good opportunity for people to learn more about Rennie Grove Peace and the services we offer, so they know we're here if and when they or anybody around them needs us.

If you belong to a group or association – whether that's a religious group, a residents' association or a society – and would like to organise a similar event for your members, we'd love to hear from you. Please contact the team on compassion@renniegrovepeace.org or call 01923 33 03 30.

Help us protect hospice care

You may have seen in the national news that the UK hospice sector is currently facing significant difficulties. These are caused by a number of factors such as rising costs, insufficient statutory funding and the lack of a long-term sustainable model for government funding, growing demand for services and a national workforce crisis impacting all of health and social care.

This all means that community support is more important than ever. We exist to provide specialist palliative and end of life care to people in our community who need it, and we can't do this without the support of our community.



2,145
people were supported with
end of life care



4,090
face-to-face appointments within
our Living Well phase

3,248
individuals supported by Rennie
Grove Peace Hospice Care across our
four phases of care

£9.1 m
total clinical expenditure 2024–25

That's why we're calling on you to help us protect hospice care for the future.

The following insights demonstrate why your support is so valuable:

"It's hard to truly describe what breathlessness feels like unless you've experienced it – that desperate gasping for air. The support I've had from Rennie Grove Peace has made a huge difference in how I cope with my condition. My quality of life has improved a lot."
John

"When Gaynor was at the Inpatient Unit, she felt so much better – her pain was under control and she was at peace with what was happening."
Val, Gaynor's sister

“The Hospice at Home team didn’t just hold Mum’s hand, they held our hands, too.”

Kate, daughter of Joan, who was cared for by our Hospice at Home team

Each of the people represented by these stats and quotes is an individual with unique needs, wishes and hopes, as well as a whole host of people who love them.

So the impact of our work is huge and touches more lives than the number of patients we care for.

Without hospice care available in the community, thousands of individuals and families would be left without the care they need at one of the most difficult times of their lives.

It really is important to protect hospice care for the future. So that the next father, mother, sister, friend or grandparent who receives a life-limiting diagnosis can access the whole range of care they need, right from the moment they need it.

You already do so much and we are extremely grateful for your support.

If you already support us financially, could you consider giving your time as well, to volunteer? If you already support us with time could you help spread the word in your local community? The more people who know about us, the more people will know to access our services when they need them and the more understanding there will be of the importance of financial support.



To find out more about the services we offer, as well as how you could support with time, money or energy, visit renniegrovepeace.org today.

‘I THOUGHT I WAS DOING IT FOR OTHER PEOPLE BUT I CAME TO REALISE THAT I GET SO MUCH OUT OF IT MYSELF’

When Vicki decided to volunteer as a Compassionate Neighbour, she thought she was doing it to benefit others. Since being matched with her Community Member, Pat, Vicki has come to realise that she gets as much out of their time together as the person she supports.

Vicki’s Community Member, Pat, says:

“When you live on your own and have health problems and eyesight problems, having a Compassionate Neighbour is absolutely brilliant. I don’t have family nearby so it has made a huge difference to me.

“It’s lovely when Vicki comes round to have somebody to talk to you. That interaction gives you something to think about – it keeps your brain going – rather than sitting here listening to the radio. I’ve made a new friend in Vicki and that’s so nice.”

Vicki adds:

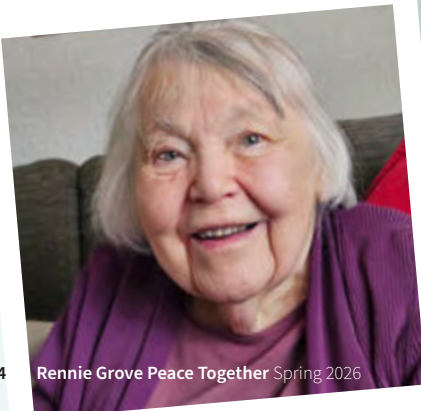
“I really, really enjoy it. At first I thought I was doing it for other people but I came to realise that I get so much out of it myself. It’s something I really look forward to.

“When I’m with Pat, I just love talking to her and finding out all the things we have in common, despite the age gap between us.

“It’s all very flexible and it doesn’t take a big chunk out of my week. It’s just one visit. It’s a small thing to me, but it can mean the world to somebody else.

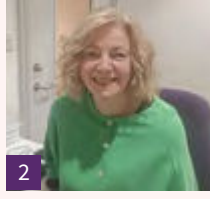
“Volunteering as a Compassionate Neighbour really has changed my life. It’s bringing me so much joy and I just hope I can bring a bit of that joy to somebody else.”

If Vicki’s story has inspired you to volunteer with us, contact the team via our volunteering form [renniegrovepeace.org/volunteerform](https://www.renniegrovepeace.org/volunteerform) to arrange a chat about which of our 100+ volunteering roles would suit you best.

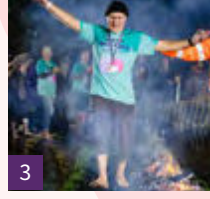




1



2



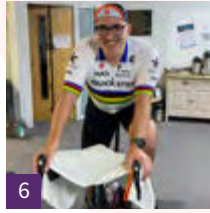
3



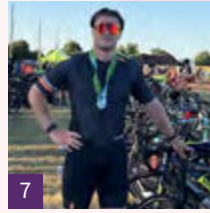
4



5



6



7



8

SUPPORTER SPOTLIGHT

1. 8-year-old **Louis** organised a cake and lemonade stall, raising a fantastic £424 in memory of a relative who was cared for at Peace Hospice.

2. **Catherine** has been volunteering as a receptionist at Grove House since 2021 and is a member of our Volunteer Engagement Group where she and other volunteers share their experiences and shape improvements for all.

3. **John** is a volunteer in our Inpatient Unit who stepped out of his comfort zone and on to hot coals at our Firewalk, raising over £1,000.

4. **Asif** and his family took on a number of challenges to raise money after his mother and sister were cared for by Rennie Grove Peace at the end of their lives. From the Chilterns 3 Peaks Challenge to a kids' jumping challenge and a sweet treats sale, the group ensured there was something for everybody – raising a whopping £8,902.

5. **Angela** and her walking netball team took part in our Rudolph Run in memory of their teammate, Alison. Together they raised over £2,500.

6. **Terence** organised a 'Bikeathon' that took place at Peace Hospice and saw him, his friends and family, as well as colleagues from EMW Law and the local business community, keep the wheels turning for 24 hours – raising £7,922.

7. **Isaac** took on a challenge to try 100 different sports in a year. From bowls to his first Ironman, Isaac raised £1,698.13 for Rennie Grove Peace and inspired many people to try a new sport.

8. A team from **Close Brothers** took part in the North Downs Ultra Challenge in memory of their colleague, Mark. The team raised an incredible £19,586.

If you're inspired to support our work, visit renniegrovepeace.org/support-us today for ideas and inspiration

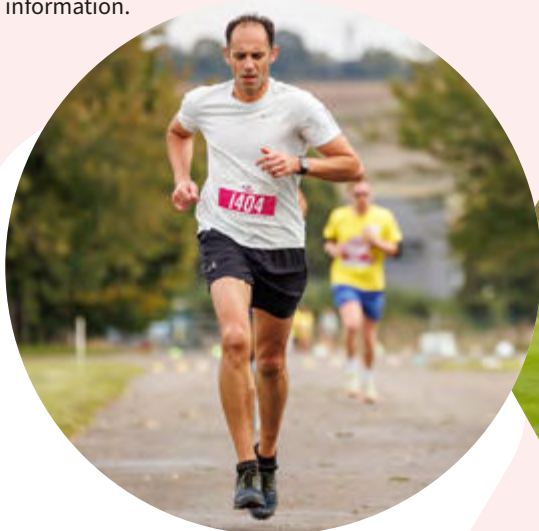
Let's get physical

If you're looking for a physical challenge this year, look no further.

RUN FOR CHARITY

Our new partnership with Run for Charity means we can now offer charity places at some of the most sought-after running events in this country and overseas. Whether you're looking for a local 10K race or you've set your sights on one of the world's most famous marathons, Run for Charity offers spaces to over 800 different running events – and gives you the opportunity to raise money for Rennie Grove Peace.

With access to even sold-out races, lower registration fees than booking direct and a choice of events from fun runs to marathons – if you're interested in running to fundraise for us, now is the perfect time to sign up! Visit renniegrovepeace.org/rfc for more information.



NEW GOLF CHALLENGE

If golf is more your game, our new Sunrise to Sunset golf challenge will give you something new to aim for. With this brand-new challenge we're inviting you to tackle either 36 or 72 holes of golf in a single day. Just choose your date around the longest day of the year in June – to give you enough hours of daylight to get around them all! – then get together with friends, relatives or colleagues and tackle this marathon or half marathon-distance challenge together to raise vital funds for local hospice care. Visit renniegrovepeace.org/golfchallenge to find out more.



GAME ON FOR ANNUAL SPORTS FUNDRAISER

Our popular Question of Sport fundraising dinner is back at Sopwell House on Thursday 30 April and there's still time to get off the sidelines and join us!

Enjoy a delicious three-course dinner, take on the lively sports quiz, and experience the excitement of our live and silent auctions – all while raising funds to help us protect hospice care.

To find out more or reserve a table for your team, visit renniegrovepeace.org/sport



THE HOSPICE LOTTERY PARTNERSHIP CELEBRATES £20 MILLION MILESTONE

Thanks to the incredible support of its players, The Hospice Lottery Partnership has now raised over £20 million for local hospices and hospitals. Every entry truly makes a difference to the care provided in our communities.

For just £1.50 a week, supporters have the chance to win a guaranteed top prize of £1,000, plus a rollover that can reach up to £25,000. If you'd like to support local care while being in with a chance to win, it's easy to get involved.

Sign up today at hospicelottery.org.uk



WHAT'S ON



ALL YEAR ROUND

ULTRA CHALLENGES

If you're looking for a physical challenge to test yourself, get in shape, or get out of your comfort zone, an Ultra Challenge® is for you. With options to walk, jog or run there's something for everybody and you don't need to be an elite athlete to take part! Visit renniegrovepeace.org/ultra to find out more.

18 APRIL 2026

HERTS CHAMBER ORCHESTRA

Enjoy an evening of classical music in St Peters Church, St Albans, in aid of Rennie Grove Peace. Email community.fundraising@renniegrovepeace.org for tickets.



30 APRIL 2026

QUESTION OF SPORT

Join us for a night packed with entertainment, laughter, and friendly competition at our annual Question of Sport event. renniegrovepeace.org/sport

15 MAY 2026

MIKE HODGE GOLF DAY

It's time to tee off for Mike's annual golf day at Aldwickbury Park Golf Club. Tickets cost £110. Contact grove.house.charity.golfday@gmail.com



26 APRIL 2026

INFLATABLE 5K

Bounce, slide and sprint your way to fundraising fun as the Inflatable 5k comes to St Albans. Tackle 30 gigantic obstacles to raise vital funds for hospice care. Tickets for Rennie Grove Peace fundraising places cost just £20. Visit renniegrovepeace.org/inflatable



JUNE – AUGUST 2026

SUNRISE TO SUNSET GOLF CHALLENGE

Have you got the drive to play 36 or 72 holes in one day? The golf equivalent of a half marathon or marathon, will you step out onto the golf course and complete the ultimate golf challenge? renniegrovepeace.org/golfchallenge

6 JUNE 2026, 18 JULY 2026,
OR PICK A DATE THAT SUITS YOU

SKY DIVE

Take the leap for Rennie Grove Peace by completing a once-in-a-lifetime tandem skydive. This allows you to experience freefall without the need for extensive training – all while raising money for hospice care. Visit renniegrovepeace.org/skydive26



7 JUNE 2026

TRING OPEN GARDENS

Enjoy an afternoon of strolling around beautiful local gardens. There will be plant sales, refreshments, a raffle and more. Tickets £7, children free. Email community.fundraising@renniegrovepeace.org for information.



11 JULY 2026

BEER AND BAND NIGHT

Join us at Tring Brewery for our Beer Festival and Band Night as part of Tring Summer Carnival. Buy tickets in advance for the best prices. Contact community.fundraising@renniegrovepeace.org

13 SEPTEMBER 2026

LONDON TO BRIGHTON

Saddle up for the 2026 London to Brighton Cycle Ride with Team RGP and challenge yourself to cycle from the capital to the coast! renniegrovepeace.org/L2B2026

AUTUMN 2026

BIKEATHON

Get ready to pedal with purpose alongside EMW Law and Rennie Grove Peace in our epic 24-hour static Bikeathon, returning for a second year. renniegrovepeace.org/bikeathon26

To find out more about our fundraising events, scan this QR code or visit renniegrovepeace.org/events2026

We hope you enjoyed reading this issue of Rennie Grove Peace Together.

If you have been inspired to protect hospice care, here are details of just some of the ways you can get involved:

SUPPORT OUR WORK

If you've been inspired by the stories in this issue, visit our website to find out how you can get involved. **If you'd like to give a gift today to support our work, visit renniegrovepeace.org/gifts**



VOLUNTEER WITH US

Search volunteer vacancies on our website or get in touch with the team on **01923 33 03 30** or **volunteers@renniegrovepeace.org**

SHOP WITH US

With 32 shops across Buckinghamshire and Hertfordshire, you're sure to find one on a high street near you.

KEEP IN TOUCH

We'd love to stay in touch via email to keep you updated on news and events from Rennie Grove Peace. Visit our website today to sign up for our emails.



01442 89 02 22
fundraising@renniegrovepeace.org
renniegrovepeace.org

Registered office: Peace Drive, Watford, Hertfordshire WD17 3PH
Registered Charity Number: 1201713

